

## How to configure lighting control for a warehouse setting

Before using the cheat sheet, please make sure you have the basic Casambi App knowledge for creating a network, pairing devices, creating groups and enabling control hierarchy. For more information, please refer to the tutorial videos on: <https://casambi.com/training/>

### Scenario

#### Warehouse with presence sensors

- A warehouse with many aisles storage. Each aisle has 8 luminaires and 2 presence sensors.
- Working hours (8:00 - 18:00): The luminaires are on at 20% and automatically dim up when presence is detected. If the sensors have not detected movement for a period of time (10 minutes) the lights dim to a low level. In the absence of movement for an additional period (10 minutes), the lights fade to 20%.
- After working hours: The luminaires automatically switch on when presence is detected. If the sensors have not detected movement for a period of time (10 minutes) the lights dim to a low level. In the absence of movement for an additional period (10 minutes), the lights dim off.

### Key Programming Overview

#### 3 Scenes

- **Working hours:** All luminaires are set to 20%.
- **Presence A1:** All luminaires in aisle 1 are set to 100%.
- **Absence A1:** All luminaires in aisle 1 are set to 40%.

#### 2 Sensors

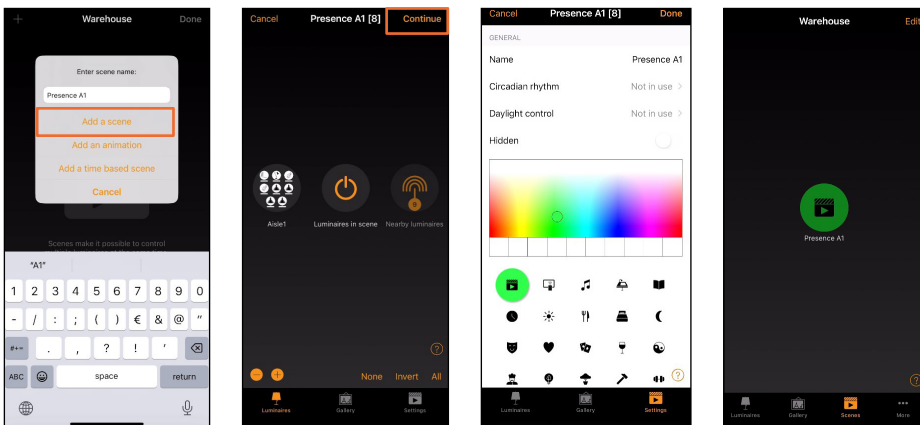
- S1 and S2 - Presence/absence mode: both sensors trigger the same presence scene when motion is detected and the same absence scene.

#### 1 Timer

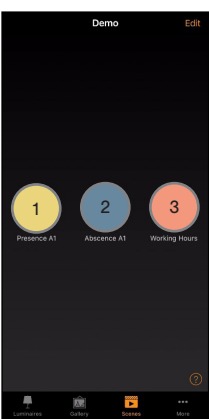
- Mo - Fr, ON 8:00 - OFF 18:00: Triggers the **Working hours** scene.

### STEP 1: SCENE Casambi App → Scene

Here we show how to configure for one aisle (A1). The total number of sensors and presence and absence scenes will depend on the quantity of aisles you have.



Repeat this process to create the other scenes:



- 1 **Presence A1:** Set luminaires in aisle 1 to 100%.
- 2 **Absence A1:** Set luminaires in aisle 1 to 40%.
- 3 **Working hours:** Set all luminaires to 20%.

Once you have created the first scene, select **Edit**, and push and hold the existing scene to copy it. A copy is created in edit mode and you can rename this scene.

The quantity of Presence and Absence scenes required will be determined by the number of aisles available. For example, if there are 5 aisles, you should generate 5 Presence scenes and 5 Absence scenes, with each scene corresponding to a specific aisle.

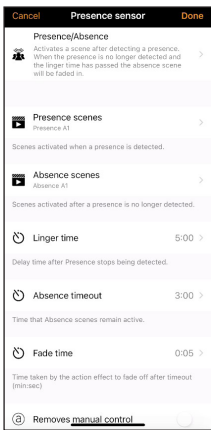
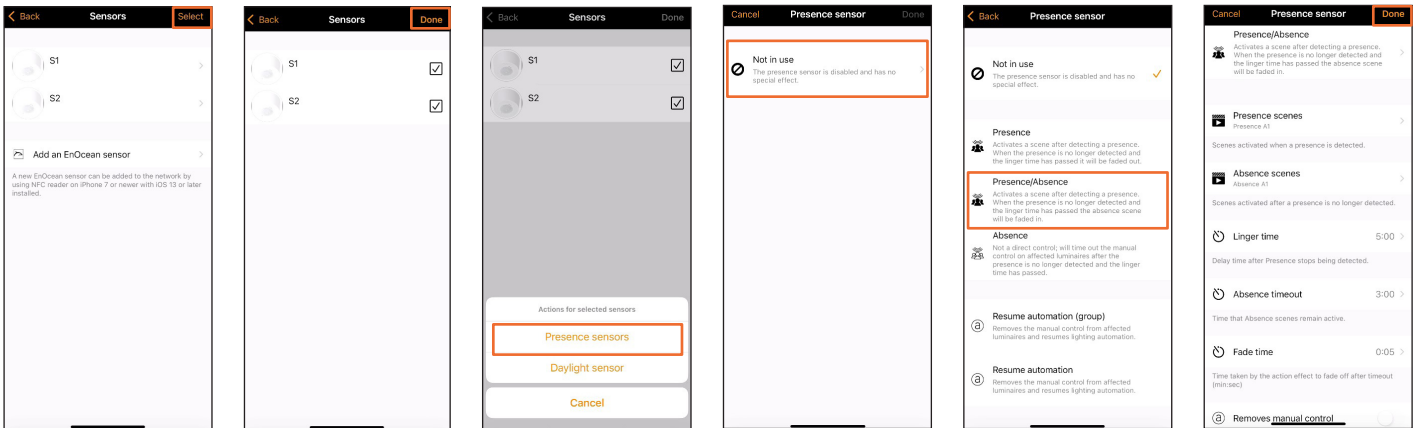
Presence and Absence scene(s) must contain the same luminaire(s). An absence scene cannot control different luminaires than those configured in the presence scene(s).

As the Working Hours scene encompasses all luminaires, only a single scene and timer will be necessary.

## STEP 2: SENSOR

Casambi App → More → **Sensor**

It is possible to configure Presence sensors settings for multiple sensors simultaneously:



— Select the **Presence A1** scene.

— Select the **Absence A1** scene.

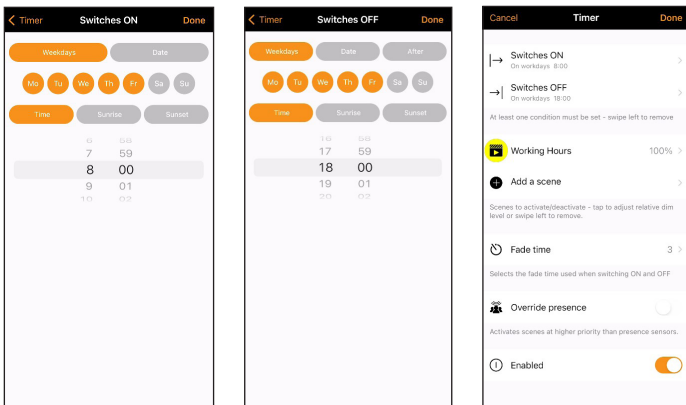
— The **Presence** scene will be faded out after 10 minutes passed without detecting presence.

— **Absence** scene will be activated after linger time has expired. The absence timeout is set to 10 minutes.

— 5 seconds is the time to dim to off or to fade into the **Absence** scene.

## STEP 3: TIMER

Casambi App → More → **Timer**



— **Switches ON**: Weekdays, Mo-Fr, Time, 8:00

— **Switches OFF**: Weekdays, Mo-Fr, Time, 18:00

— Select the **Working hours** scene. The light level applies to the scene selected. Light level is set to 100% as the scene is already 20%.

— Time it will take for the luminaires in the scene to reach their defined light level. Fading will start when the timer is activated. In this case, the luminaires will take 3 seconds to fade in /out.

— Disable **Override presence**.

— Select **Enabled** button.