

How to configure lighting control for a facade setting

Before using the cheat sheet, please make sure you have the basic Casambi App knowledge for creating a network, pairing devices, creating groups and enabling control hierarchy. For more information, please refer to the tutorial videos on: <https://casambi.com/training/>

Scenario

Facade with RGBW luminaires

- Everyday: All days: Lights turn on at sunset and turn off at sunrise.
- Specific day: Pride day: An animation scene will be activated at sunset time and switched off at sunrise.

Key Programming Overview

8 Scenes

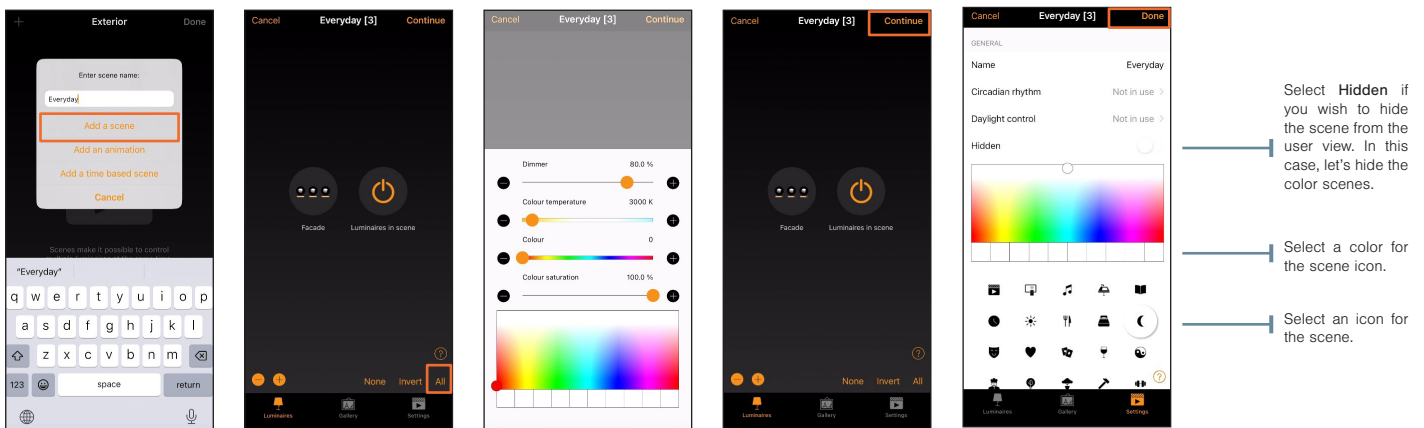
- **Everyday** - All lights: White color, 80%.
- **Red/Orange/Yellow/Green/Blue/Purple** - All lights: Respective color, 100%.
- **Pride day** - Animation composed by the basic scenes (Red/Orange/Yellow/Green/Blue/Purple) that will repeat after the last animation step.

2 Timers

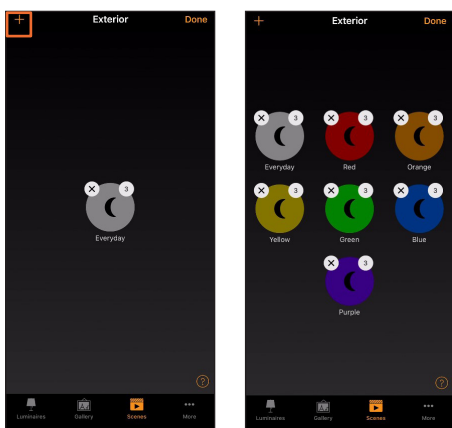
- All days ON Sunset time - OFF Sunrise time: Triggers the **Everyday** scene.
- Date timer ON Sunset time - OFF Sunrise time: Triggers the **Pride day** animation.

STEP 1: SCENE Casambi App → Scene

In the Scenes tab, create the basic scenes:



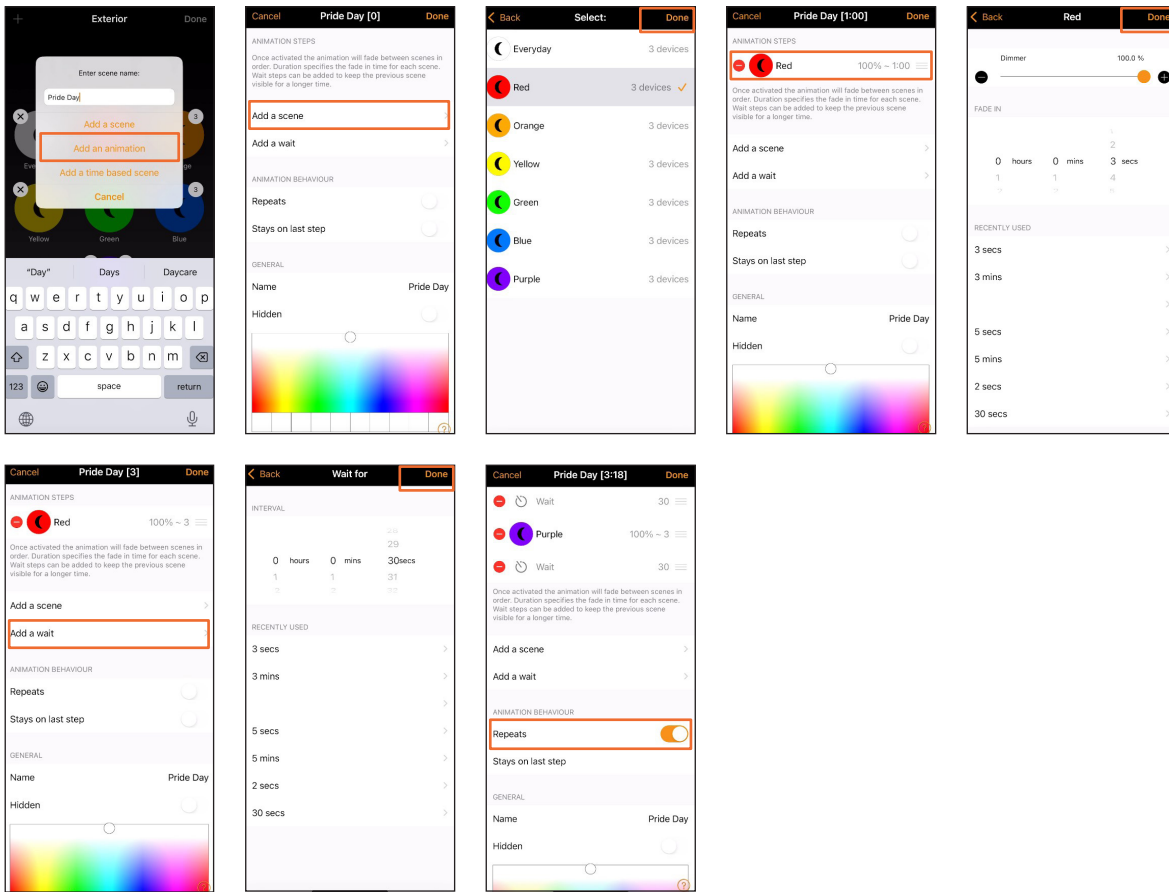
Push and hold the group to open the screen configuration, where you can set the dim level, color temperature, color and color saturation.



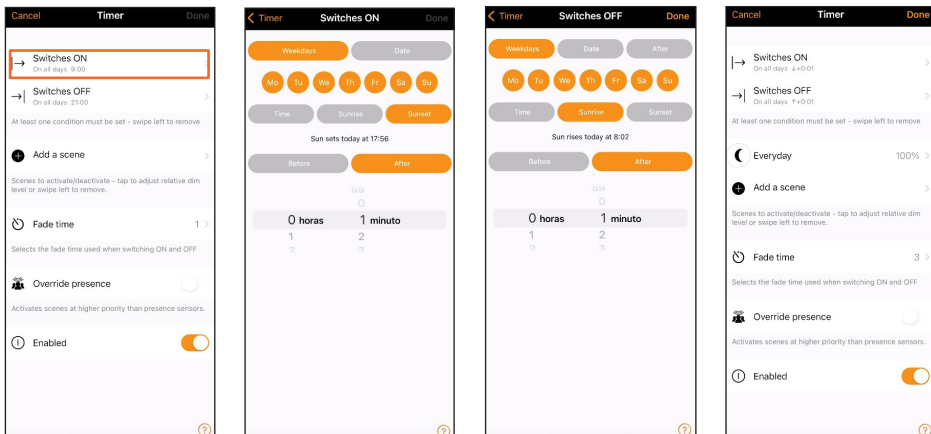
Add more scenes by using the "+" at the top of the Scenes tab.

Repeat this process to create the color scenes (**Red/Orange/Yellow/Green/Blue/Purple**).

Create the animation once the basic scenes have been generated:

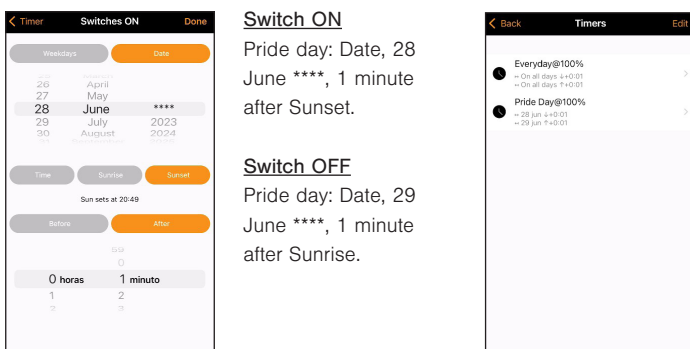


STEP 2: TIMER



- Everyday: Weekdays, Mo-Su, 1 minute after Sunset.
- Everyday: Weekdays, Mo-Su, 1 minute after Sunrise.
- The light level applies to the scene selected. e.g., light level set as 10% and the scene is 50%, then the luminaires level will be restricted to 5%. In this case, the light level is 100% because the scene is already set to 80%.
- Time it will take for the luminaires in the scene to reach their defined light level. Fading will start when the timer is activated. In this case, the luminaires will take 3 seconds to fade in /out.
- Select Enabled button.

Create the second timer as a **Date timer** using the **Pride day** scene and the same configuration as the first timer:



Switch ON
Pride day: Date, 28 June ****, 1 minute after Sunset.

Switch OFF
Pride day: Date, 29 June ****, 1 minute after Sunrise.

It is necessary to set **Location** to use sunrise and sunset times.

Timers have different priorities levels in the Casambi Control Hierarchy: a Weekday timer has a lower priority than a Date timer.